



# Electrolux

## Digital Cabinets 1 Door Digital Refrigerator, 670lt (-2 +10) - Remote

ITEM # \_\_\_\_\_

MODEL # \_\_\_\_\_

NAME # \_\_\_\_\_

SIS # \_\_\_\_\_

AIA # \_\_\_\_\_



Digital Cabinets

1 Door Digital Refrigerator, 670lt (-2 +10) - Remote

727275 (REX71FRR)

1-door refrigerator  
670lt, -2+10°C, digital,  
remote, AISI 304

### Short Form Specification

Item No. \_\_\_\_\_

Full door refrigerator with internal and external structure in 304 AISI stainless steel; external back panel in galvanized steel and bottom panel in anti-corrosive material. Digital control with cabinet temperature display and setting and manual activation of defrost cycle. Fully compliant HACCP digital controls include visible alarms. Optimized back to front forced air flow provides even temperature distribution and fast cooling in any conditions. Fitted with 75 mm-thick cyclopentane insulating foam. On-site reversible door features lock and door microswitch to switch off the fan when the door is opened. Hidden evaporator to guarantee higher storage capacity and less corrosion problems. Remote refrigeration unit; ventilated operation; automatic defrost and evaporation of defrost water. For ambient temperatures up to 43 °C. CFC and HCFC free. R134a gas in refrigeration circuit.

Supplied with n. 3x2/1GN Rilsan coated grids and n. 3 sets of 2 stainless steel grid runners.

### Main Features

- Right hinged full door.
- Digital control with cabinet temperature display and setting and manual activation of defrost cycle. Fully compliant HACCP digital controls include visible alarms.
- Large storage area suitable to contain 2/1 GN grids or shelves on anti-tilt runners.
- Optimized back to front forced air flow provide even temperature distribution and fast cooling in any conditions.
- Automatic defrost.
- Internal structure with numerous charging positions available to host grids, ensuring higher net capacity and a greater storage space.
- Operating temperature can be adjusted from -2 to +10 °C to suit different food storage requirements.
- Cabinet fitted with up to 75 mm thickness of cyclopentane insulation for best insulating performance with 100% environmental protection (thermal conductivity: 0,020 W/m\* K).
- Removable triple-chamber balloon magnetic gasket to improve insulation and reduce energy consumption.
- 60 mm-thick insulation covering the evaporator can be easily removed with a single operation.
- Rilsan coated grids for improved protection.
- Hidden evaporator thus guaranteeing higher storage capacity and less corrosion problems.

### Construction

- Constructed from the highest quality AISI 304 Stainless steel.
- Interior base with corners, pressed from a single sheet.
- Stainless steel runners and supports easily disassembled.
- Anti-corrosion bottom avoids any damage that may be caused to the cabinet by aggressive detergents employed to clean the floors.
- Easy access to the main components for maintenance.
- Lockable door.
- Door switch stops the fan when door is opened to avoid cold air exiting the cell, thus saving energy.
- Refrigerant type: R134a.
- CFC and HCFC-free insulation.
- Doors are self-closing and can be fully opened up to 180°.

APPROVAL: \_\_\_\_\_



Electrolux

1 Door Digital Refrigerator, 670lt (-2 +10) - Remote  
Digital Cabinets



- Mounted on adjustable Stainless steel feet, with castors as an option.
- Remote refrigeration unit to suit operating conditions.
- The rounded internal corners, the easily removable runners and grids allow for ease of cleaning and high hygiene standards.

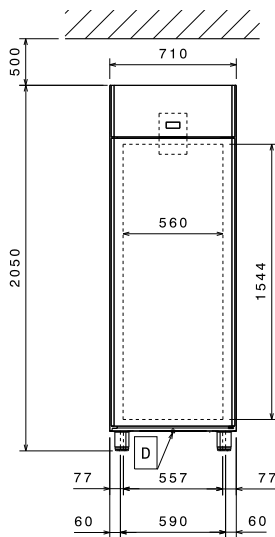
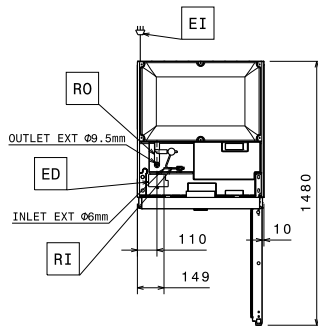
### Included Accessories

- 3 of 2/1GN grey rilsan grid with 2 runners PNC 881020

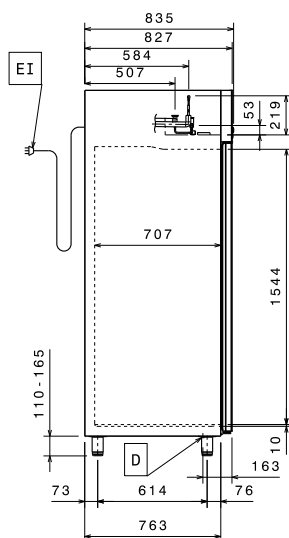
### Optional Accessories

- Remote unit -2+10°C for 670lt refrigerated cabinets and HD counters  PNC 880231
- Grids support with 50 positions for Ecostore cabinets  PNC 880236
- 2 stainless steel runners for refrigerated cabinets - (Marine)  PNC 880242
- Set of 8 GNI/1 PVC containers for fish  PNC 880243
- Spacer for 670 lt and 1430 lt refrigerated cabinets  PNC 880248
- Kit integrated HACCP for digital refrigerators (IR33)  PNC 880252
- Pedal opening for cabinets  PNC 880324
- 1/1GN plastic container with false bottom  PNC 880705
- Kit of 10 pairs of runners and 4 tray supports to fit pastry trays (400x600mm)  PNC 881003
- 2/1GN grey rilsan grid  PNC 881004
- 2/1GN aisi 304 stainless steel grid  PNC 881016
- 2/1GN 304 AISI stainless steel grid with 2 runners  PNC 881018
- Meat rail for 670/1430lt refrigerators with 4 hooks  PNC 881019
- 2/1GN grey rilsan grid with 2 runners  PNC 881020
- Set of 2 stainless steel runners for 670/1430lt refrigerators and freezers  PNC 881021
- 2/1GN perforated shelf  PNC 881042
- 1/1GN rilsan steel wire basket h=150mm  PNC 881043
- Printer for HACCP basic version (for cabinets and counters with digital control)  PNC 881457



**Front**

**Top**


= Remote electrical connection  
 ED = Remote electrical connection  
 EI = Electrical connection  
 RI = Refrigerant Inlet  
 RO = Refrigerant Outlet

**Side**


### Electric

**Supply voltage:**  
 727275 (REX71FRR) 230 V/1 ph/50 Hz

### Key Information:

**Gross capacity:** 670 lt  
**Door hinges:** Right Side  
**External dimensions, Height:** 2050 mm  
**External dimensions, Width:** 710 mm  
**External dimensions, Depth:** 835 mm  
**External dimensions, Depth with Doors Open:** 1480 mm  
**Number and type of doors:** 1  
**Number and type of grids (included):** 3 - GN 2/1  
**Type of external material:** 304 AISI  
**Type of internal material:** 304 AISI  
**Number of positions & pitch:** 44; 30 mm

### Refrigeration Data

**Refrigerant type:** R134a  
**Refrigeration power at evaporation temperature:** -10 °C  
**Operating temperature min.:** -2 °C  
**Suggested refrigeration power\*:** 320 W  
**Condition at evaporation temperature:** -10 °C  
**Condition at condensation temperature:** 55 °C  
**Condition at ambient temperature:** 32 °C  
**Connection pipes (remote) - outlet:** 9.5 mm  
**Connection pipes (remote) - inlet:** 6 mm  
 Ref. Power calculated at a linear distance of 15 mt (piping)

**\*Note:**